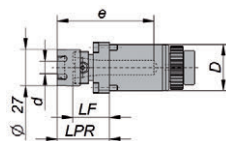


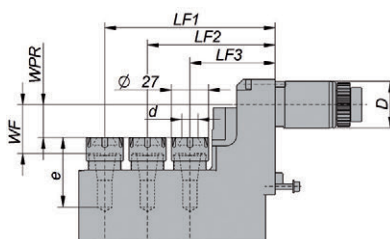
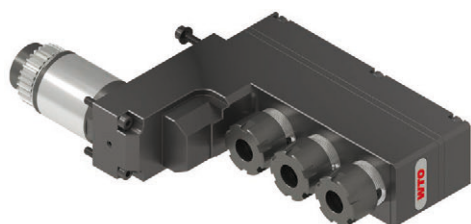
橫向鑽銑刀座



料號	機床介面		刀具介面	尺寸/參數							
	D	機床		驅動	d	LPR	LF	e	n max. [rpm]	M [Nm]	i n1:n2
NF16-DNE-ST34A-038-E-A	34	SB 12/20 R SR 20/32 JII / 20R IV SV 20 R SW 20 SX 38	正齒輪	ER-16NF	0.5-10	38.5	27	71.5	8000	20	1:1

尺寸 mm. 包含螺帽及止付螺絲ER-16Nf

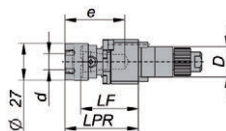
三軸鑽銑動力刀座



料號	機床介面		刀具介面	尺寸/參數										
	D	機床		驅動	d	LF1	LF2	LF3	WPR	WF	e	n max. [rpm]	M [Nm]	i n1:n2
NF16-DNI-ST34A-062-E-X3-A	34	SB 12/20 R SR 20/32 JII / 20R IV	正齒輪	ER-16NF	0.5-10	124	93	62	24	35.5	50.5	8000	6	1:1

尺寸 mm. 包含螺帽及止付螺絲ER-16Nf

副主軸用鑽銑動力刀座



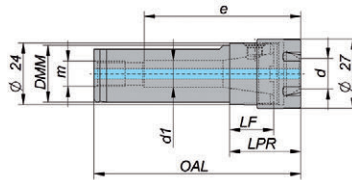
料號	機床介面		刀具介面	尺寸/參數							
	D	機床		驅動	d	LPR	LF	e	n max. [rpm]	M [Nm]	i n1:n2
NF16-DNE-ST22A-053-E-A	22	SB 12/20 R SR 20/32 JII SV 20 R SW 12 R II	正齒輪	ER-16NF	0.5-10	53.5	42	43.5	8000	10	1:1
NF16-DNE-ST22B-053-E-A	22	SR 20R IV SW 20	正齒輪	ER-16NF	0.5-10	53.5	42	43.5	8000	10	1:1




尺寸 mm. 包含螺帽及止付螺絲ER-16Nf

直柄轉接刀把

鎖固平面

可安裝於搪刀刀位，彈性運用ER 筒夾及nanoFlex® 快換刀把



尺寸	料號	DMM	d min.	d max.	LF	LPR	OAL	d ₁	m	e			
ER-16NF	NF16-SSH-022-A	22	0.5	10	17	28.5	80.0	10.5	G ¹ / ₈ "	60.5	NF16-SCN-A	107520005	NF16-SPL-A

尺寸 mm. 包含螺帽及止付螺絲ER-16NF

基本刀具組合

NF16-DNE-ST34A-038-E-SK-A

包含

- 1 NF16-DNE-ST34A-038-E-A 橫向鑽銑刀座
- 1 NF16-SAD-ER11-A ER11M 筒夾刀把
- 1 NF16-SDR-A 驅動環 (含 NF16鎖固螺絲)
- 1 NF16-STW-A 扭力板手
- 1 107516002 板手 SW19
- 1 107520005 ER-16NF 板手
- 1 107511005 ER11M 板手

